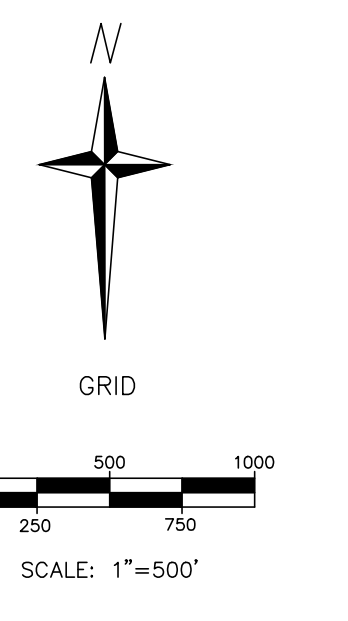
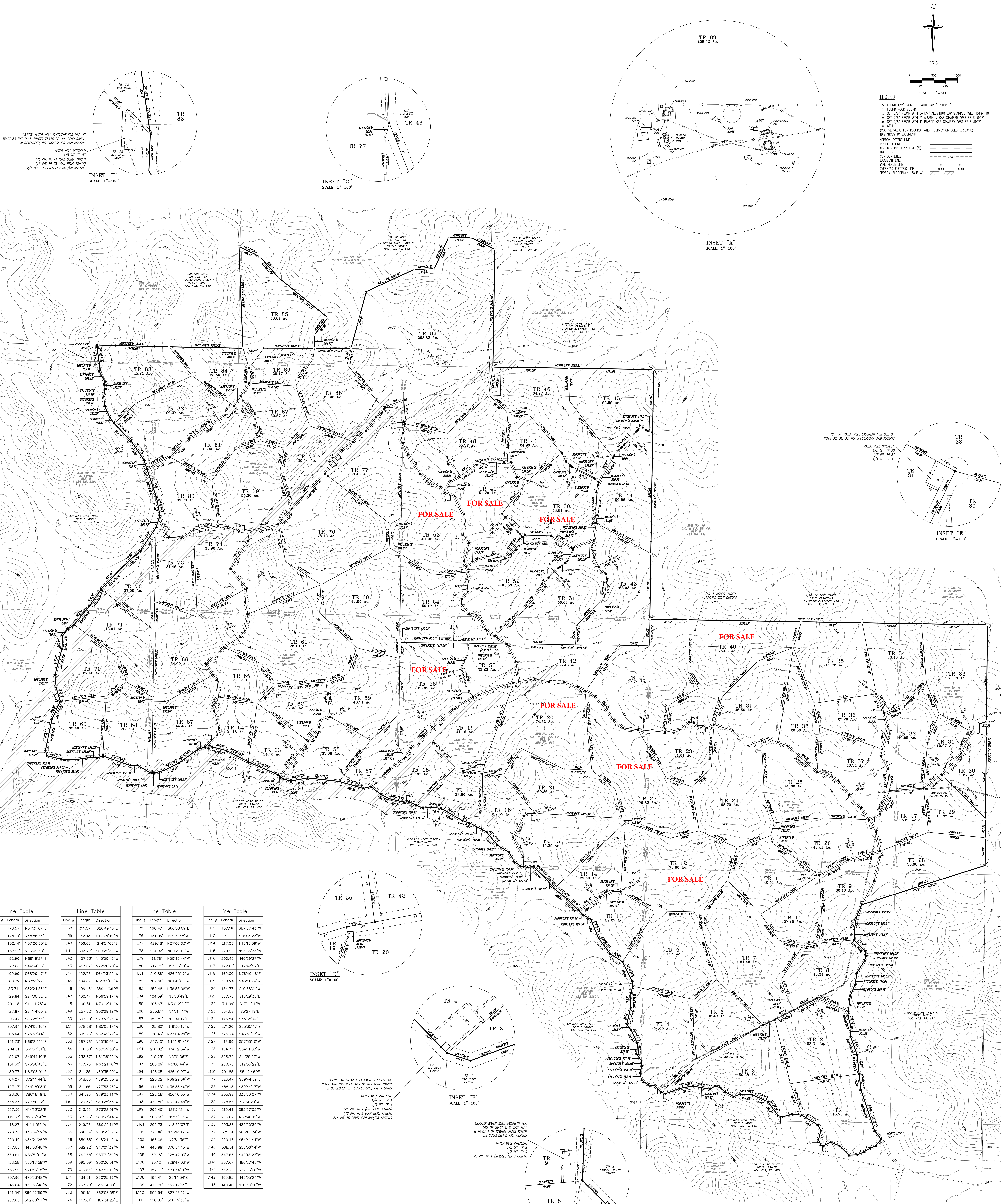


NEWBY HILLS RANCH



LEGEND

- FOUND 1/2" BORE HOLE WITH CAP 'BUSHING'
- FOUND ROCK WOUND
- SET 5/8" REBAR WITH 3-1/4" ALUMINUM CAP STAMPED 'WES WELLS 9007'
- SET 5/8" REBAR WITH 1" ALUMINUM CAP STAMPED 'WES WELLS 9007'
- SET 5/8" REBAR WITH 1" PLASTIC CAP STAMPED 'WES WELLS 9007'
- WELL
- (COURSE VALUE PER RECORD PATENT SURVEY OR DEED (A.E.C.))
- BUSINESS TO BUSINESS
- APPROX. PATENT LINE
- PROPERTY LINE (P)
- TRACE LINE
- ALONG PROPERTY LINE (P)
- CONTOUR LINE
- EASEMENT LINE
- WIRE FENCE LINE
- OVERHEAD ELECTRIC LINE
- APPROX. FLOORPLAN 'ZONE A'

Line #	Length	Direction
L1	178.57	N37°31'07"E
L2	125.19	N68°56'44"E
L3	152.14	N57°26'03"E
L4	157.21	N66°42'58"E
L5	182.90	N88°19'23"E
L6	277.86	S44°54'05"E
L7	199.38	S89°24'57"E
L8	168.39	N63°21'27"E
L9	53.74	S82°24'7"E
L10	129.84	S24°00'32"E
L11	201.48	S14°42'25"W
L12	127.87	S24°44'00"E
L13	203.42	S83°25'56"E
L14	207.94	N74°05'16"E
L15	105.64	S75°57'44"E
L16	151.73	N89°21'42"E
L17	204.01	S81°57'51"E
L18	152.07	S49°44'10"E
L19	101.69	S76°36'46"E
L20	130.77	N62°08'01"E
L21	104.27	S72°11'44"E
L22	197.17	S44°18'08"E
L23	128.30	S86°18'19"E
L24	565.55	N27°50'02"E
L25	527.36	N14°13'32"E
L26	119.67	N22°54'47"E
L27	418.27	N11°11'57"E
L28	296.38	N33°25'59"E
L29	290.40	N34°21'28"W
L30	377.88	N43°00'48"W
L31	369.64	N36°51'01"W
L32	158.58	N56°17'58"W
L33	333.99	N71°58'38"W
L34	207.90	N70°33'48"W
L35	245.64	N70°33'48"W
L36	121.34	S69°22'59"W
L37	267.05	S82°00'57"W
L38	311.57	S26°49'16"E
L39	143.18	S12°28'40"W
L40	106.08	S14°19'10"E
L41	353.27	S69°22'59"W
L42	457.73	N45°50'46"W
L43	417.02	N72°26'20"W
L44	152.73	S82°23'59"E
L45	104.07	N63°01'08"W
L46	106.47	S89°11'06"W
L47	100.47	N56°59'17"W
L48	100.81	N79°12'44"W
L49	257.32	S52°29'12"W
L50	307.00	S79°52'28"W
L51	578.68	N85°05'17"W
L52	309.93	N82°42'29"W
L53	287.76	N50°30'06"W
L54	430.30	N37°59'50"W
L55	238.87	N61°56'20"W
L56	177.79	N63°21'10"W
L57	311.30	N69°35'09"W
L58	318.85	N89°25'35"W
L59	311.66	N77°53'26"W
L60	341.95	S79°23'14"W
L61	120.37	S80°25'33"W
L62	213.55	S73°22'51"W
L63	552.96	S69°57'44"W
L64	219.73	S60°22'11"W
L65	360.74	S58°55'52"W
L66	859.80	S48°24'49"W
L67	382.92	S47°01'39"W
L68	242.68	S33°31'30"W
L69	395.09	S52°36'31"W
L70	416.66	S42°57'12"W
L71	134.21	S60°25'19"W
L72	263.98	S52°14'00"E
L73	195.15	S62°08'08"E
L74	117.81	N87°31'23"E
L75	160.47	S66°58'09"E
L76	431.08	N72°28'48"W
L77	429.18	N27°58'03"W
L78	214.92	N60°21'10"W
L79	91.78	N50°45'44"W
L80	217.31	N53°58'10"W
L81	216.82	N39°42'24"E
L82	307.60	N61°10'07"W
L83	259.48	N36°55'08"W
L84	104.59	N37°00'49"E
L85	205.67	N39°12'21"E
L86	255.81	N43°41'41"W
L87	159.81	N11°41'17"E
L88	125.80	N19°20'17"W
L89	126.46	N23°04'29"W
L90	397.10	N10°48'14"E
L91	216.02	N34°42'34"W
L92	215.21	N67°10'26"E
L93	208.89	N59°44'7"E
L94	428.00	N26°59'02"W
L95	223.32	N69°29'36"W
L96	141.33	N38°58'40"W
L97	522.58	N56°10'33"W
L98	479.86	N32°42'49"W
L99	265.40	N21°31'24"W
L100	208.68	N15°59'37"W
L101	302.73	N19°59'59"E
L102	150.92	N30°19'19"W
L103	466.06	N29°11'7"E
L104	443.99	S70°54'07"W
L105	59.15	S28°47'03"W
L106	93.12	S28°47'03"W
L107	152.01	S51°54'11"W
L108	194.41	S31°43'47"E
L109	476.26	S27°19'55"E
L110	505.94	S27°28'12"W
L111	100.05	S56°19'37"W
L112	137.16	S87°37'43"W
L113	171.11	S16°03'23"W
L114	217.03	N13°13'39"W
L115	229.28	N25°35'33"W
L116	200.45	N48°29'27"W
L117	122.01	S12°42'57"E
L118	169.00	N76°40'48"E
L119	368.94	S46°11'24"W
L120	154.37	S10°36'07"W
L121	367.70	S19°29'33"E
L122	311.09	S17°41'17"W
L123	354.82	S9°27'19"E
L124	143.54	S35°35'47"E
L125	271.20	S30°35'47"E
L126	525.74	S46°51'12"W
L127	416.99	S57°35'10"W
L128	154.77	S31°11'07"W
L129	328.72	S11°35'27"W
L130	260.79	S12°33'22"E
L131	291.80	S24°46'46"W
L132	523.47	S39°44'39"E
L133	488.13	S30°44'17"W
L134	205.92	S33°30'07"W
L135	228.56	S73°12'29"W
L136	215.44	S80°37'35"W
L137	263.02	N67°48'11"W
L138	253.38	N80°29'59"W
L139	529.81	S80°18'47"W
L140	308.31	S58°36'14"W
L141	347.65	S49°18'23"W
L142	362.79	S37°03'06"W
L143	103.85	N49°05'24"W
L144	410.40	N16°50'58"W